

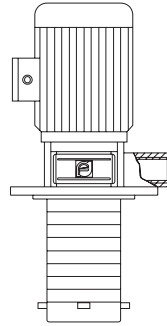


INDUSTRIAL PUMP SYSTEMS

PRODUCT MANUAL

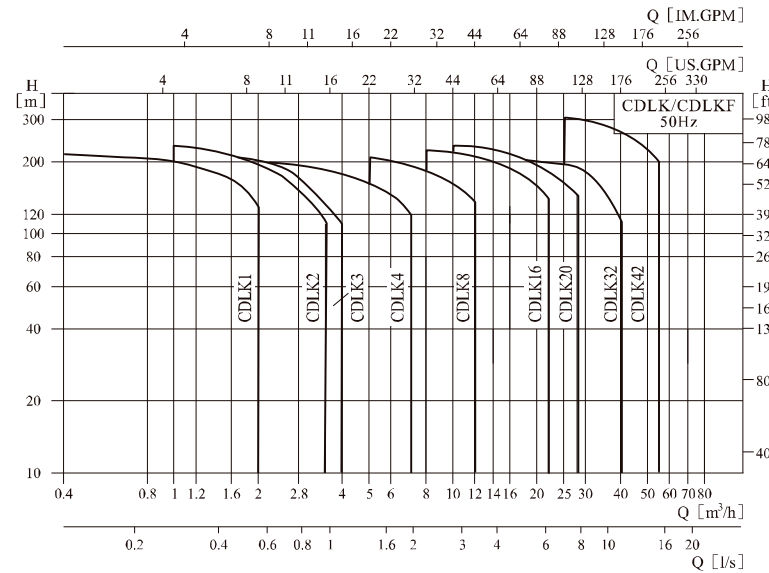
CDLK, CDLKF

www.ipspumps.be



CDLK(F) Immersion type multistage centrifugal pump

Performance scope



Product range

Description	CDLK1	CDLK2	CDLK3	CDLK4	CDLK8	CDLK16	CDLK20	CDLK32	CDLK42
Rate flow [m³/h]	1	2	3	4	8	16	20	32	42
Rate flow [l/s]	0.28	0.56	0.83	1.1	2.2	4.4	5.6	8.9	11.7
Flow range [m³/h]	0.4~2	1~3.5	1.2~4	1.5~7	5~12	8~22	10~28	16~40	25~55
Flow range [l/s]	0.11~0.56	0.28~0.97	0.33~1.1	0.42~1.9	1.4~3.3	2.2~6.1	2.8~7.8	4.4~11.1	6.9~15.3
Max. pressure [bar]	21	23	22	21	21	22	23	26	30
Motor power [kW]	0.37~2.2	0.37~3	0.37~3	0.37~4	0.75~7.5	2.2~15	2.2~18.5	1.5~30	3~45
Temp. [°C]	-15~+120								
Max. efficiency (%)	44	46	54	57	62	66	69	73	75

Operation conditions

- Thin, clean non-explosive liquid without solid grains and fibers; can be used for conveying of water, cooling water solution and cutting lubricating liquid.
- Liquid temperature:
Normal temperature type: -15°C~+70°C
Warm water type: -15°C~+120°C

Application

- CDLK/CDLKF is used for conveying cooling liquid, lubricating liquid and condensation water of machine tools, industrial cleaning equipment or other cases that application of immersed pump is suitable, and is applicable to various temperature, flow and pressure ranges. CDLKF is applicable to low-corrosive liquid.
- Concretely, it is applicable to electric spark, lathe, grinding machine, processing center, cooling devices, industrial cleaning equipment, filtering system etc.

Performance curve

1. All curves are based on measured values of 50Hz: constant motor speed 2900r/min.
2. The allowable tolerance of the curve complies with ISO9906 Annex A.
3. For measurement, air-free water with temperature 20°C and kinematical viscosity 1 mm²/s.
4. The pump application is in reference to performance scope of Heavy line to prevent overheating due to too low flow and motor overload due to too high flow rate etc.

Motor

- The motor is fully-sealed, air-cooling standard motor 2 poles
- Protection class: IP55
- Insulation class: F
- Standard voltage: 1X220-230/240V
3X200/346V
3X220-240/380-415V
3X220-255/380-440V
- Motors for other voltages can be supplied according to the requirement.
- Single phase motors with 0.37~2.2kW are available.

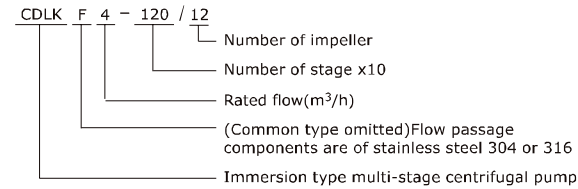
Pump

- CDLK/CDLKF is non-self priming multi-stage centrifugal pump installed with standard motor. The motor shaft is directly connected with the pump shaft through coupling. According to the requirement, the pump can be equipped with intelligent protector, which effectively protects pump from dry rotation, phase lack, overload etc. In order to meet the requirement of installation depth of the water tank or vessel, it is possible to install cavity body for changing length of the pump. Length for different number of stages is shown in the dimensions & weight table and the table of products supply scope.

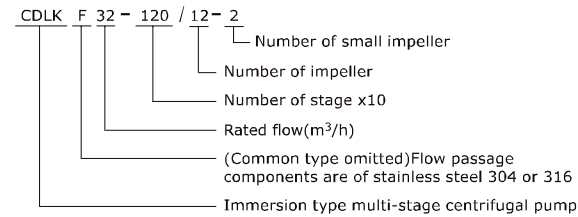
CDLK,CDLKF

Definition of model

CDLK,CDLKF1,2,3,4,8,16 and 20

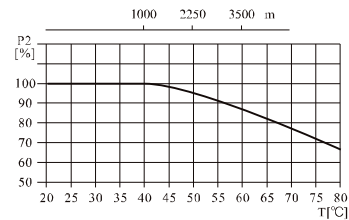


CDLK,CDLKF32 and 42



Max. Ambient temperature

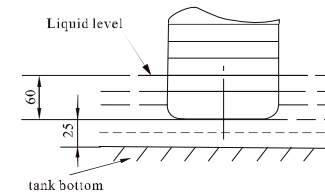
●When the pump operates under ambient temperature higher than 40°C or under altitude higher than 1000m, because of low air density and poor cooling effects, the motor output power P₂ will be decreased to certain extent. If the pump is operated under the above-mentioned conditions, it should be equipped with motor of higher power.



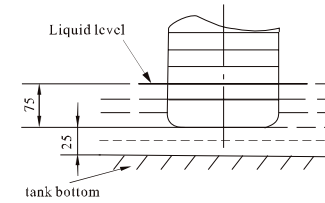
Installation of pump

The dimensions shown in the below drawing are the minimum installation ones:

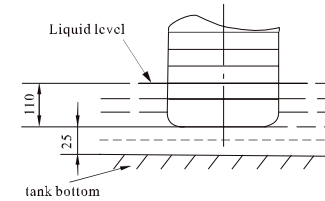
CDLK/CDLKF1,2,3,4



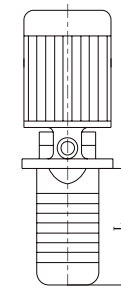
CDLK/CDLKF8,16,20



CDLK/CDLKF32,42



Installation sketch



CDLK,CDLKF

Scope of available products

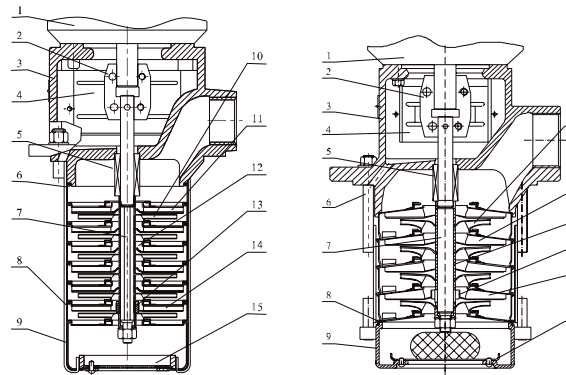
Diagram	Stages	Number of impellers															L (mm)
		2	3	4	5	6	7	8	10	12	14	17					
CDLK 20 50 Hz	20	●															180
	30	○	●														225
	40	○	○	●													270
	50	○	○	○	●												315
	60	○	○	○	○	●											360
	70	○	○	○	○	○	●										405
	80	○	○	○	○	○	○	●									450
	100	○	○	○	○	○	○	○	●								540
	120	○	○	○	○	○	○	○	○	●							630
	140	○	○	○	○	○	○	○	○	○	●						720
170	○	○	○	○	○	○	○	○	○	○	●					855	
Motor (kW)		2.2	4.0	5.5	7.5	11	15	18.5									

Diagram	Stages	Number of impellers														L (mm)	
		1	2	3	4	5	6	7	8	9	10	11	12	13	14		
CDLK 32 50 Hz	10	●															186
	20	○	●														256
	30	○	○	●													326
	40	○	○	○	●												396
	50	○	○	○	○	●											466
	60	○	○	○	○	○	●										536
	70	○	○	○	○	○	○	●									606
	80	○	○	○	○	○	○	○	●								676
	90	○	○	○	○	○	○	○	○	●							746
	100	○	○	○	○	○	○	○	○	○	●						816
	110	○	○	○	○	○	○	○	○	○	○	●					886
	120	○	○	○	○	○	○	○	○	○	○	○	●				956
	130	○	○	○	○	○	○	○	○	○	○	○	○	●			1026
	140	○	○	○	○	○	○	○	○	○	○	○	○	○	●		1096

Diagram	Stages	Number of impellers													L (mm)		
		1	2	3	4	5	6	7	8	9	10	11	12	13			
CDLK 42 50 Hz	10	●															198
	20	○	●														278
	30	○	○	●													358
	40	○	○	○	●												438
	50	○	○	○	○	●											518
	60	○	○	○	○	○	●										598
	70	○	○	○	○	○	○	●									678
	80	○	○	○	○	○	○	○	●								758
	90	○	○	○	○	○	○	○	○	●							838
	100	○	○	○	○	○	○	○	○	○	●						918
	110	○	○	○	○	○	○	○	○	○	○	●					998
	120	○	○	○	○	○	○	○	○	○	○	○	●				1078
	130	○	○	○	○	○	○	○	○	○	○	○	○	●			1158

● Basic type ○ Available on request

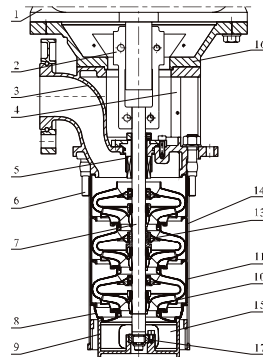
Sectional drawing CDL/CDLF1,2,3,4,8,12,16,20



Material CDL/CDLF1,2,3,4,8,12,16,20

NO.	Name	Material	AISI/ASTM
1	Motor		
2	Coupling	Carbon steel	
4	Coupling guard	Stainless steel	AISI304
5	Mechanical seal		
6	Straps	Stainless steel	AISI304
7	Shaft	Stainless steel	AISI316
8	Inducer	Stainless steel	AISI304
9	Suction head	Stainless steel	AISI304
10	Impeller	Stainless steel	AISI304
11	Diffuser	Stainless steel	AISI304
12	Impeller sleeve	Stainless steel	AISI304
13	Bearing	Tungsten carbide	
14	Support diffuser	Stainless steel	AISI304
15	strainer	Stainless steel	AISI304
CDLK			
3	Pump head	Cast iron	ASTM25B
CDLKF			
3	Pump head	Stainless steel	AISI304

Sectional drawing CDL/CDLF32,42

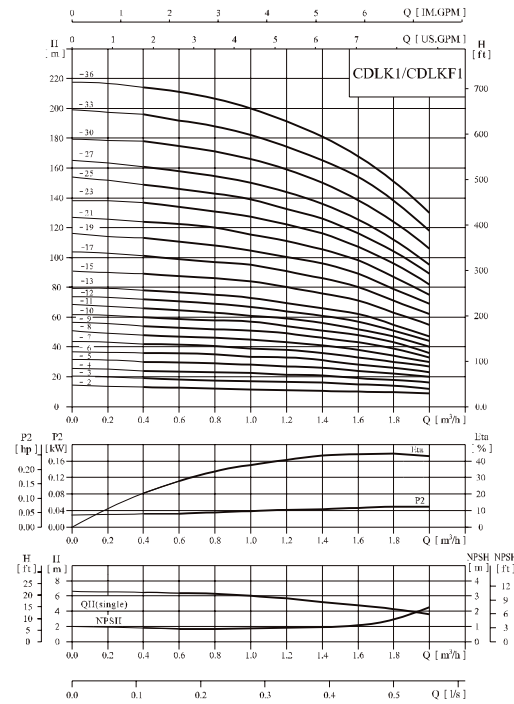


Material CDL/CDLF32,42

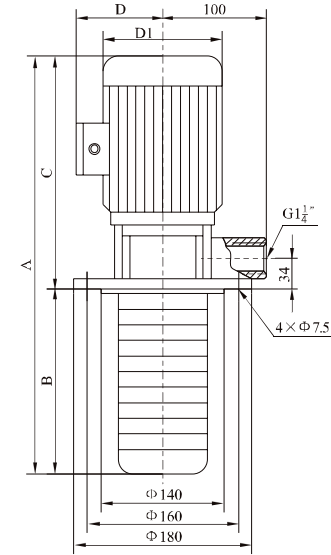
NO.	Name	Material	AISI/ASTM
1	Motor		
2	Coupling	Carbon steel	
4	Coupling guard	Stainless steel	AISI304
5	Mechanical seal		
6	Straps	Stainless steel	AISI304
7	Shaft	Stainless steel	AISI316 AISI304 AISI431
8	Inducer	Stainless steel	AISI304
9	Suction head	Stainless steel	AISI304
10	Impeller	Stainless steel	AISI304
11	Diffuser	Stainless steel	AISI304
13	Bearing	Tungsten carbide	
14	Support diffuser	Stainless steel	AISI304
15	strainer	Stainless steel	AISI304
16	Crossover flange	Cast iron	ASTM25B
17	Bottom bearing	Tungsten carbide	
CDLK			
3	Pump head	Cast iron	ASTM25B
CDLKF			
3	Pump head	Stainless steel	AISI304

CDLK,CDLKF1

Performance curve ISO9906 Annex A



Installation sketch



The overall dimensions of the single-phase motor and explosion-proof motor are a little changed. P1s contact us for details.

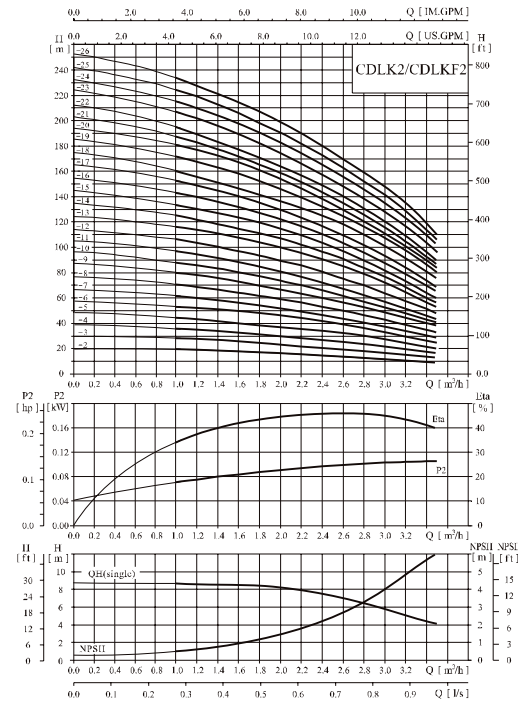
Performance table

Model	Driving motor		Q (m³/h)	H (m)								
	(kW)	(hp)		0.4	0.6	0.8	1.0	1.2	1.4	1.6	1.8	2.0
CDLK1-20/2	0.37	0.5	13	12.5	12	11.5	11	10.5	10	9.5	9	
CDLK1-30/3	0.37	0.5	19	18	17.5	17	16.5	16	15	14	12	
CDLK1-40/4	0.37	0.5	24	23.5	23	22.5	21.5	21	19	18	16	
CDLK1-50/5	0.37	0.5	30	29.6	29	28	27	26	24	22	20	
CDLK1-60/6	0.37	0.5	36	35.5	35	33.5	33	31	28	26	23	
CDLK1-70/7	0.37	0.5	42	41	40.5	39	38	36	33	30	27	
CDLK1-80/8	0.55	0.75	48	47	46	45	43	41	38	34	30	
CDLK1-90/9	0.55	0.75	54	53	52	51	49	46	43	39	33	
CDLK1-100/10	0.55	0.75	60	59	58	57	54	51	48	43	36	
CDLK1-110/11	0.55	0.75	66	65	63	61	59	56	52	47	40	
CDLK1-120/12	0.75	1	72	71	69	67	64	61	57	51	44	
CDLK1-130/13	0.75	1	78	77	75	73	69	66	62	55	47	
CDLK1-150/15	0.75	1	89	88	86	84	79	76	71	63	55	
CDLK1-170/17	1.1	1.5	101	99	97	95	89	86	80	71	62	
CDLK1-190/19	1.1	1.5	113	110	108	106	99	96	89	79	69	
CDLK1-210/21	1.1	1.5	124	122	120	117	110	106	98	87	75	
CDLK1-230/23	1.1	1.5	137	133	131	128	121	116	107	96	82	
CDLK1-250/25	1.5	2	149	145	143	139	131	126	116	104	89	
CDLK1-270/27	1.5	2	161	157	155	150	141	136	125	112	95	
CDLK1-300/30	1.5	2	178	175	171	166	157	150	139	124	106	
CDLK1-330/33	2.2	3	196	192	188	183	173	165	154	137	118	
CDLK1-360/36	2.2	3	214	210	205	200	190	181	169	151	130	

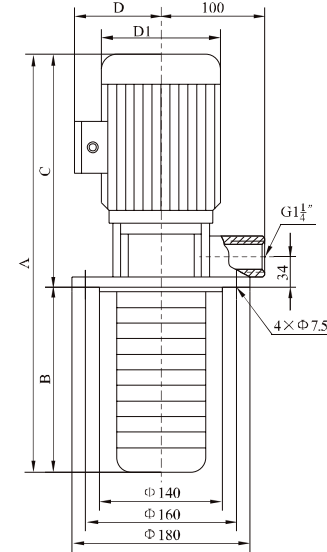
Size and weight

Model	Size (mm)					Weight (kg)
	A	B	C	D	D1	
CDLK1-20/2	453	123	330	117	148	15
CDLK1-30/3	471	141	330	117	148	15
CDLK1-40/4	489	159	330	117	148	15
CDLK1-50/5	507	177	330	117	148	16
CDLK1-60/6	525	195	330	117	148	16
CDLK1-70/7	543	213	330	117	148	16
CDLK1-80/8	561	231	330	117	148	17
CDLK1-90/9	579	249	330	117	148	17
CDLK1-100/10	597	267	330	117	148	17
CDLK1-110/11	615	285	330	117	148	17
CDLK1-120/12	661	303	358	142	170	20
CDLK1-130/13	679	321	358	142	170	20
CDLK1-150/15	715	357	358	142	170	20
CDLK1-170/17	751	393	358	142	170	22
CDLK1-190/19	787	429	358	142	170	22
CDLK1-210/21	823	465	358	142	170	23
CDLK1-230/23	859	501	358	142	170	23
CDLK1-250/25	950	537	413	155	190	30
CDLK1-270/27	986	573	413	155	190	30
CDLK1-300/30	1040	627	413	155	190	31
CDLK1-330/33	1094	681	413	155	190	34
CDLK1-360/36	1148	735	413	155	190	35

Performance curve ISO9906 Annex A



Installation sketch



The overall dimensions of the single-phase motor and explosion-proof motor are a little changed. P1s contact us for details.

Performance table

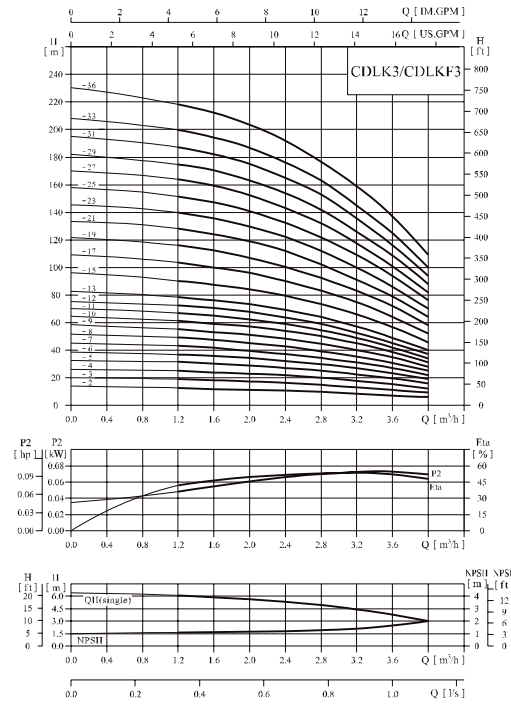
Model	Driving motor		Q (m³/h)	H (m)												
	(kW)	(hp)		1.0	1.2	1.6	2.0	2.4	2.8	3.2	3.5					
CDLK2-20/2	0.37	0.5	1.8	17	16	15	13	12	10	8						
CDLK2-30/3	0.37	0.5	27	26	24	22	20	18	15	12						
CDLK2-40/4	0.55	0.75	36	35	33	30	26	24	20	16						
CDLK2-50/5	0.55	0.75	45	43	40	37	33	30	24	20						
CDLK2-60/6	0.75	1	53	52	50	45	40	36	30	24						
CDLK2-70/7	0.75	1	63	61	57	52	47	41	35	28						
CDLK2-90/9	1.1	1.5	80	78	73	67	61	54	45	37						
CDLK2-110/11	1.1	1.5	98	95	89	82	73	64	54	44						
CDLK2-130/13	1.5	2	116	114	106	98	89	78	65	52						
CDLK2-150/15	1.5	2	134	130	123	112	100	90	73	60						
CDLK2-180/18	2.2	3	161	157	148	136	121	108	91	76						
CDLK2-220/22	2.2	3	197	192	180	165	148	130	110	90						
CDLK2-260/26	3.0	4	232	228	214	198	179	158	130	110						

Size and weight

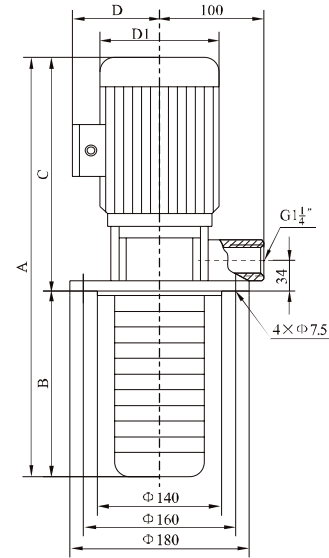
Model	Size(mm)					Weight (kg)
	A	B	C	D	D1	
CDLK2-20/2	453	123	330	117	148	15
CDLK2-30/3	471	141	330	117	148	15
CDLK2-40/4	489	159	330	117	148	17
CDLK2-50/5	507	177	330	117	148	17
CDLK2-60/6	553	195	358	142	170	20
CDLK2-70/7	571	213	358	142	170	20
CDLK2-90/9	607	249	358	142	170	22
CDLK2-110/11	643	285	358	142	170	22
CDLK2-130/13	734	321	413	155	190	29
CDLK2-150/15	770	357	413	155	190	29
CDLK2-180/18	824	411	413	155	190	33
CDLK2-220/22	896	483	413	155	190	33
CDLK2-260/26	1003	555	478	165	197	41

CDLK,CDLKF3

Performance curve ISO9906 Annex A



Installation sketch



The overall dimensions of the single-phase motor and explosion-proof motor are a little changed. Pls contact us for details.

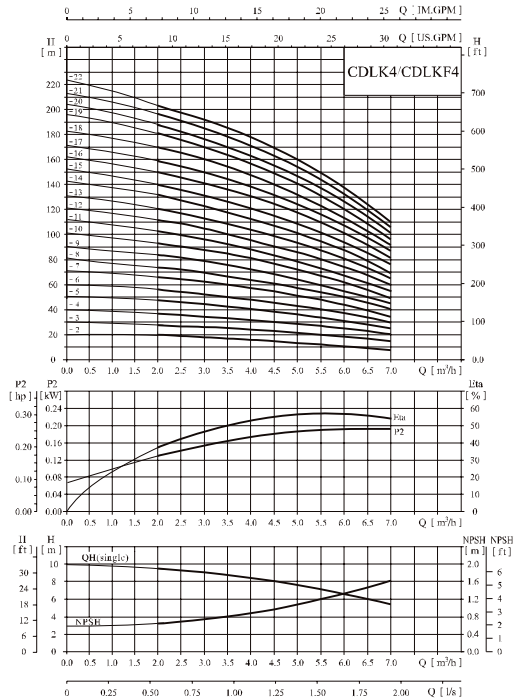
Performance table

Model	Driving motor		Q (m³/h)	H (m)									
	(kW)	(hp)		1.2	1.6	2.0	2.4	2.8	3.0	3.2	3.6	4.0	
CDLK3-20/2	0.37	0.5	12.5	11.5	11	10.5	10	9	8	7	6		
CDLK3-30/3	0.37	0.5	19	18.5	17.5	16.5	15	14	13	11	9		
CDLK3-40/4	0.37	0.5	25	24	23	21.5	20	19	18	15	12		
CDLK3-50/5	0.37	0.5	31	30	29	27	25	23	22	19	16		
CDLK3-60/6	0.55	0.75	36	35	34	32	30	28	27	23	19		
CDLK3-70/7	0.55	0.75	43	41	39	37	34	32	31	27	22		
CDLK3-80/8	0.75	1	49	47	45	43	39	37	35	31	25		
CDLK3-90/9	0.75	1	55	53	51	48	45	42	40	35	28		
CDLK3-100/10	0.75	1	61	59	57	54	50	47	45	39	31		
CDLK3-110/11	1.1	1.5	67	64	61	58	54	51	49	42	34		
CDLK3-120/12	1.1	1.5	73	70	67	63	58	55	52	45	37		
CDLK3-130/13	1.1	1.5	78	76	73	69	64	60	57	49	40		
CDLK3-150/15	1.1	1.5	90	88	84	79	73	69	66	57	46		
CDLK3-170/17	1.5	2	103	100	96	90	83	79	75	64	52		
CDLK3-190/19	1.5	2	115	112	107	100	92	88	83	72	58		
CDLK3-210/21	2.2	3	128	124	119	112	102	98	91	79	64		
CDLK3-230/23	2.2	3	140	135	130	122	112	107	100	86	70		
CDLK3-250/25	2.2	3	151	147	141	131	122	116	109	94	76		
CDLK3-270/27	2.2	3	164	159	152	143	132	124	117	101	82		
CDLK3-290/29	2.2	3	175	170	163	153	142	133	126	109	88		
CDLK3-310/31	3.0	4	187	182	175	165	153	142	135	116	94		
CDLK3-330/33	3.0	4	199	194	187	176	163	151	145	125	100		
CDLK3-360/36	3.0	4	218	212	204	192	178	168	159	137	109		

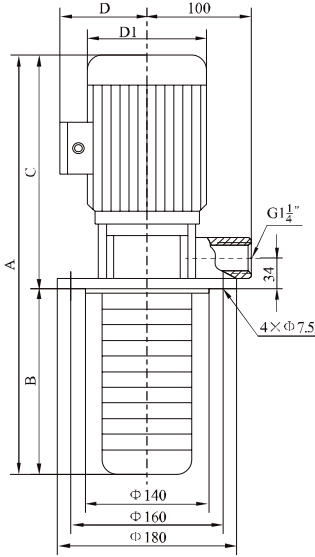
Size and weight

Model	Size(mm)					Weight (kg)
	A	B	C	D	D1	
CDLK3-20/2	453	123	330	117	148	15
CDLK3-30/3	471	141	330	117	148	15
CDLK3-40/4	489	159	330	117	148	15
CDLK3-50/5	507	177	330	117	148	16
CDLK3-60/6	525	195	330	117	148	17
CDLK3-70/7	543	213	330	117	148	17
CDLK3-80/8	589	231	358	142	170	19
CDLK3-90/9	607	249	358	142	170	20
CDLK3-100/10	625	267	358	142	170	20
CDLK3-110/11	643	285	358	142	170	21
CDLK3-120/12	661	303	358	142	170	21
CDLK3-130/13	679	321	358	142	170	22
CDLK3-150/15	715	357	358	142	170	22
CDLK3-170/17	806	393	413	155	190	28
CDLK3-190/19	842	429	413	155	190	29
CDLK3-210/21	878	465	413	155	190	32
CDLK3-230/23	914	501	413	155	190	32
CDLK3-250/25	950	537	413	155	190	33
CDLK3-270/27	986	573	413	155	190	33
CDLK3-290/29	1022	609	413	155	190	33
CDLK3-310/31	1123	645	478	165	197	40
CDLK3-330/33	1159	681	478	165	197	41
CDLK3-360/36	1213	735	478	165	197	41

Performance curve ISO9906 Annex A



Installation sketch



The overall dimensions of the single-phase motor and explosion-proof motor are a little changed. PIs contact us for details.

Performance table

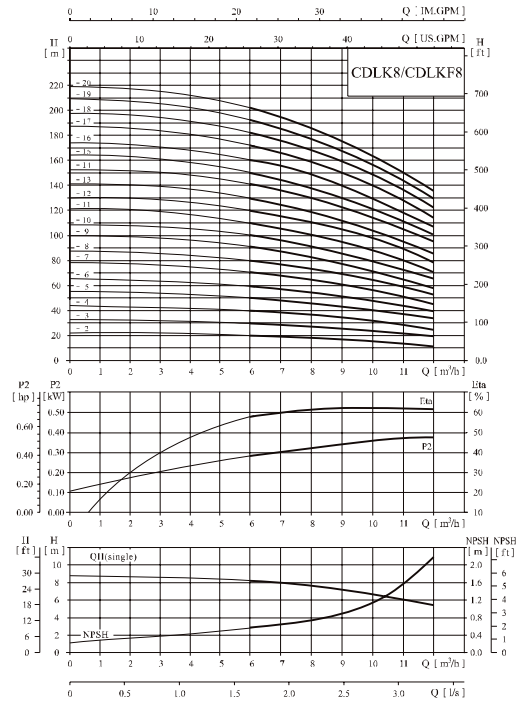
Model	Driving motor		Q (m³/h)	H (m)						
	(kW)	(hp)		1.5	2.0	3.0	4.0	5.0	6.0	7.0
CDLK4-20/2	0.37	0.5	19	18	17	15	13	12	8	
CDLK4-30/3	0.55	0.75	28	27	26	24	20	18	13	
CDLK4-40/4	0.75	1	38	36	34	32	27	24	19	
CDLK4-50/5	1.1	1.5	47	45	43	40	34	31	23	
CDLK4-60/6	1.1	1.5	56	54	52	48	41	37	28	
CDLK4-70/7	1.5	2	66	63	61	56	48	43	33	
CDLK4-80/8	1.5	2	74	72	70	64	55	50	38	
CDLK4-100/10	2.2	3	96	90	87	81	71	62	48	
CDLK4-120/12	2.2	3	114	108	104	95	85	75	58	
CDLK4-140/14	3.0	4	136	126	122	112	101	89	68	
CDLK4-160/16	3.0	4	152	144	140	129	115	101	78	
CDLK4-190/19	4.0	5.5	183	171	168	153	137	122	93	
CDLK4-220/22	4.0	5.5	211	200	192	178	160	138	108	

Size and weight

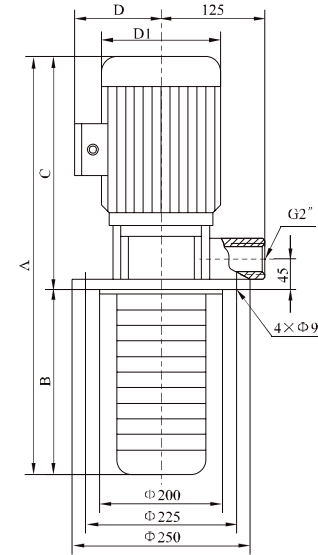
Model	Size(mm)					Weight (kg)
	A	B	C	D	D1	
CDLK4-20/2	478	148	330	117	148	15
CDLK4-30/3	505	175	330	117	148	15
CDLK4-40/4	560	202	358	142	170	18
CDLK4-50/5	587	229	358	142	170	20
CDLK4-60/6	614	256	358	142	170	21
CDLK4-70/7	696	283	413	155	190	27
CDLK4-80/8	723	310	413	155	190	28
CDLK4-100/10	777	364	413	155	190	30
CDLK4-120/12	831	418	413	155	190	30
CDLK4-140/14	950	472	478	165	197	35
CDLK4-160/16	1064	526	478	165	197	35
CDLK4-190/19	1095	607	488	185	230	40
CDLK4-220/22	1176	688	488	185	230	41

CDLK,CDLK F8

Performance curve ISO9906 Annex A



Installation sketch



The overall dimensions of the single-phase motor and explosion-proof motor are a little changed. Pls contact us for details.

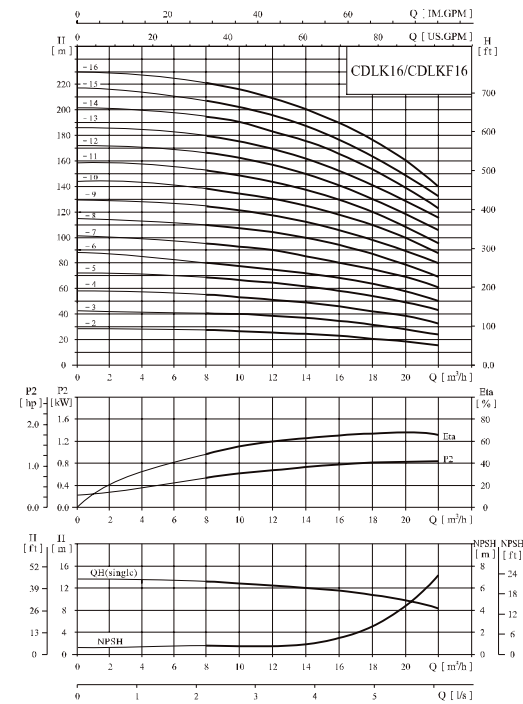
Performance table

Model	Driving motor		Q (m³/h)	H (m)											
	(kW)	(hp)		5	6	7	8	9	10	11	12				
CDLK8-20/2	0.75	1	20	19.5	19	18	17	16	14	13					
CDLK8-30/3	1.1	1.5	30	29.5	28.5	27	25	24	21	19					
CDLK8-40/4	1.5	2	41	39.5	38	36	34	32	28	26					
CDLK8-50/5	2.2	3	52	50	48	45	42	40	36	32					
CDLK8-60/6	2.2	3	62	60	57	54	51	48	43	39					
CDLK8-80/8	3.0	4	83	80	77	73	69	65	58	52					
CDLK8-100/10	4.0	5.5	104	100	97	92	87	81	73	65					
CDLK8-120/12	4.0	5.5	124	120	116	111	104	92	87	78					
CDLK8-140/14	5.5	7.5	145	141	136	130	122	113	102	92					
CDLK8-160/16	5.5	7.5	166	161	156	148	139	130	118	106					
CDLK8-180/18	7.5	10	187	182	175	167	157	146	134	120					
CDLK8-200/20	7.5	10	208	202	195	186	175	163	150	135					

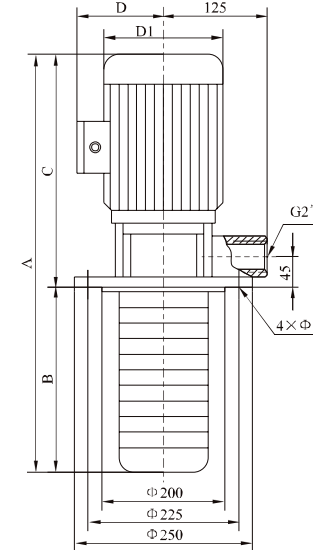
Size and weight

Model	Size(mm)					Weight (kg)
	A	B	C	D	D1	
CDLK8-20/2	516	150	366	142	170	22
CDLK8-30/3	546	180	366	142	170	27
CDLK8-40/4	629	210	419	155	190	27
CDLK8-50/5	659	240	419	155	190	36
CDLK8-60/6	689	270	419	155	190	37
CDLK8-80/8	814	330	494	165	197	42
CDLK8-100/10	884	390	494	185	230	52
CDLK8-120/12	944	450	494	185	230	53
CDLK8-140/14	1059	510	549	210	260	75
CDLK8-160/16	1119	570	549	210	260	77
CDLK8-180/18	1179	630	549	210	260	85
CDLK8-200/20	1239	690	549	210	260	87

Performance curve ISO9906 Annex A



Installation sketch



The overall dimensions of the single-phase motor and explosion-proof motor are a little changed. Pls contact us for details.

Performance table

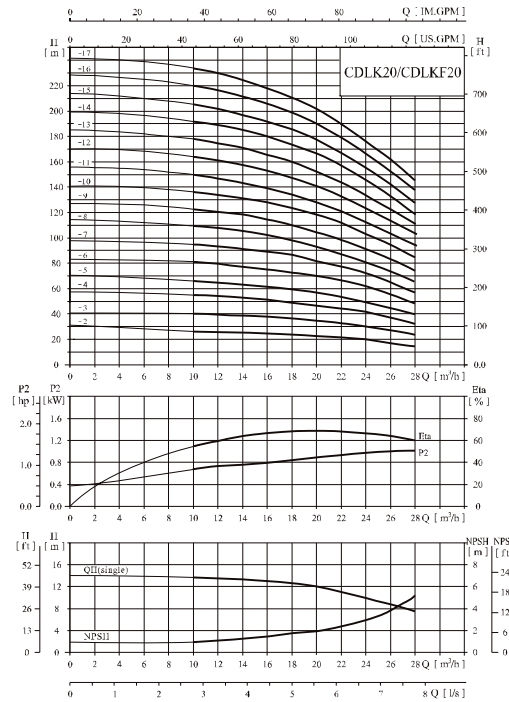
Model	Driving motor		Q (m³/h)	H (m)								
	(kW)	(hp)		8	10	12	14	16	18	20	22	
CDLK16-20/2	2.2	3		27	26	25	24	22	21	19	16	
CDLK16-30/3	3.0	4		41	40	38	37	34	32	29	25	
CDLK16-40/4	4.0	5.5		54	53	52	49	46	43	38	34	
CDLK16-50/5	5.5	7.5		68	67	65	62	58	54	48	43	
CDLK16-60/6	5.5	7.5		82	80	78	74	70	64	58	52	
CDLK16-70/7	7.5	10		96	95	91	87	82	76	68	61	
CDLK16-80/8	7.5	10		110	108	104	99	94	86	77	70	
CDLK16-100/10	11	15		138	136	131	125	118	109	97	87	
CDLK16-120/12	11	15		166	162	157	150	141	130	116	105	
CDLK16-140/14	15	20		194	190	184	175	166	152	136	122	
CDLK16-160/16	15	20		222	217	210	200	189	174	156	140	

Size and weight

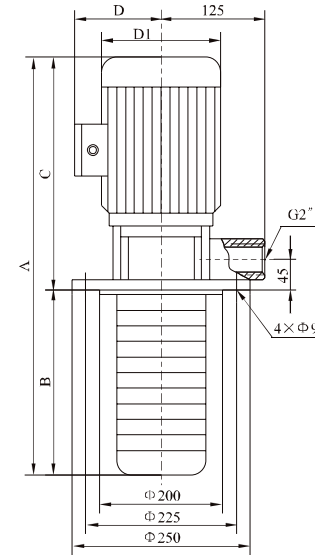
Model	Size(mm)					Weight (kg)
	A	B	C	D	D1	
CDLK16-20/2	599	180	419	155	190	37
CDLK16-30/3	709	225	484	165	197	47
CDLK16-40/4	764	270	494	185	230	52
CDLK16-50/5	864	315	549	210	260	67
CDLK16-60/6	909	360	549	210	260	72
CDLK16-70/7	954	405	549	210	260	77
CDLK16-80/8	999	450	549	210	260	78
CDLK16-100/10	1240	540	700	255	330	135
CDLK16-120/12	1330	630	700	255	330	140
CDLK16-140/14	1420	720	700	255	330	155
CDLK16-160/16	1510	810	700	255	330	162

CDLK,CDLKF20

Performance curve ISO9906 Annex A



Installation sketch



The overall dimensions of the single-phase motor and explosion-proof motor are a little changed. Pls contact us for details.

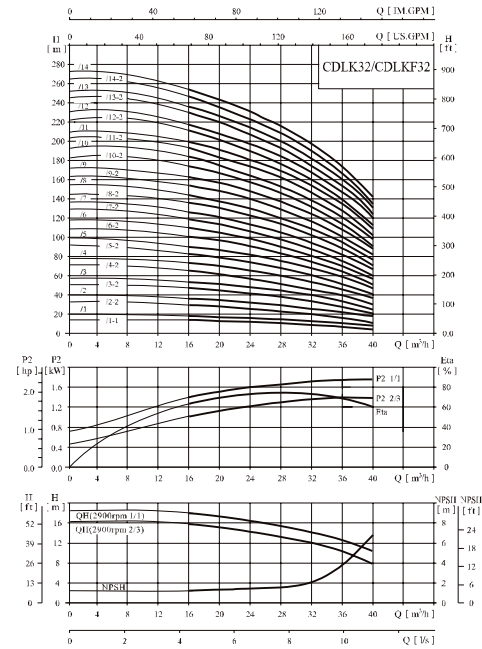
Performance table

Model	Driving motor		Q (m³/h)	H (m)											
	(kW)	(hp)		10	12	14	16	18	20	22	24	26	28		
CDLK20-20/2	2.2	3	27	26.5	26	25	24	23	22	20	18	15			
CDLK20-30/3	4.0	5.5	40	39.5	39	38	37	35	33	30	27	24			
CDLK20-40/4	5.5	7.5	54	53	52	51	49	47	44	41	37	33			
CDLK20-50/5	5.5	7.5	67	66	64	62	60	58	55	50	45	40			
CDLK20-60/6	7.5	10	81	79	77	75	73	70	66	61	55	49			
CDLK20-70/7	7.5	10	95	93	91	89	86	82	77	71	65	58			
CDLK20-80/8	11	15	109	107	105	102	99	94	89	82	75	67			
CDLK20-100/10	11	15	136	134	131	128	124	118	111	103	95	85			
CDLK20-120/12	15	20	164	162	159	154	149	142	133	124	114	102			
CDLK20-140/14	15	20	192	189	185	180	174	166	156	145	133	119			
CDLK20-170/17	18.5	25	234	230	225	219	212	202	190	177	162	145			

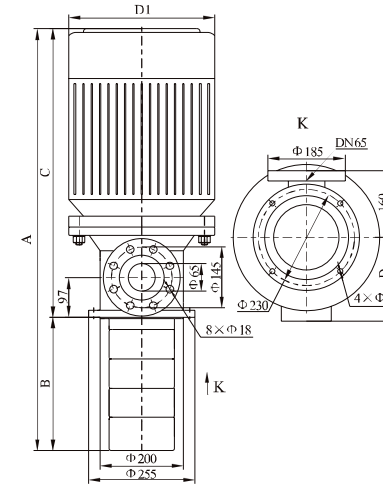
Size and weight

Model	Size(mm)					Weight (kg)
	A	B	C	D	D1	
CDLK20-20/2	599	180	419	155	190	37
CDLK20-30/3	719	225	494	185	230	50
CDLK20-40/4	819	270	549	210	260	65
CDLK20-50/5	864	315	549	210	260	67
CDLK20-60/6	909	360	549	210	260	75
CDLK20-70/7	954	405	549	210	260	77
CDLK20-80/8	1150	450	700	255	330	131
CDLK20-100/10	1240	540	700	255	330	135
CDLK20-120/12	1330	630	700	255	330	151
CDLK20-140/14	1420	720	700	255	330	155
CDLK20-170/17	1605	855	750	255	330	181

Performance curve ISO9906 Annex A



Installation sketch



The overall dimensions of the single-phase motor and explosion-proof motor are a little changed. P1s contact us for details.

Performance table

Model	Driving motor		Q (m³/h)	H (m)								
	(kW)	(hp)		16	20	24	28	32	36	40		
CDLK32-10/1-1	1.5	2		14	13	12	11	9	7	4		
CDLK32-10/1	2.2	3		18	17	15	14	13	11	8		
CDLK32-20/2-2	3.0	4		29	28	26	23	20	16	11		
CDLK32-20/2	4.0	5.5		36	34	32	29	27	23	18		
CDLK32-30/3-2	5.5	7.5		47	44	41	38	33	28	21		
CDLK32-30/3	5.5	7.5		54	51	48	44	40	35	27		
CDLK32-40/4-2	7.5	10		65	62	58	53	46	40	30		
CDLK32-40/4	7.5	10		72	69	65	59	53	47	37		
CDLK32-50/5-2	11	15		83	79	74	68	60	52	41		
CDLK32-50/5	11	15		90	86	81	74	67	59	47		
CDLK32-60/6-2	11	15		101	97	90	83	74	65	51		
CDLK32-60/6	11	15		108	104	97	90	81	72	57		
CDLK32-70/7-2	15	20		119	114	107	98	88	78	60		
CDLK32-70/7	15	20		126	121	113	105	95	85	67		
CDLK32-80/8-2	15	20		136	131	123	114	102	90	71		
CDLK32-80/8	15	20		144	138	130	120	109	97	77		
CDLK32-90/9-2	18.5	25		154	148	140	129	117	102	82		
CDLK32-90/9	18.5	25		162	156	147	136	124	109	88		
CDLK32-100/10-2	18.5	25		175	166	157	146	131	115	91		
CDLK32-100/10	18.5	25		182	173	164	152	138	122	98		
CDLK32-110/11-2	22	30		193	184	173	164	146	128	102		
CDLK32-110/11	22	30		200	191	180	168	153	135	109		
CDLK32-120/12-2	22	30		211	201	189	178	160	140	113		
CDLK32-120/12	22	30		218	208	196	184	167	147	120		
CDLK32-130/13-2	30	40		230	218	206	193	174	153	124		
CDLK32-130/13	30	40		237	225	213	200	181	160	131		
CDLK32-140/14-2	30	40		247	235	222	210	189	165	135		
CDLK32-140/14	30	40		255	242	229	216	196	172	142		

Size and weight

Model	Size(mm)					Weight (kg)
	A	B	C	D	D1	
CDLK32-10/1-1	621	186	435	155	190	49/51
CDLK32-10/1						
CDLK32-20/2-2	746/756	256	490/500	165/185	197/230	57/62
CDLK32-20/2						
CDLK32-30/3-2	881	326	555	210	260	70
CDLK32-30/3						
CDLK32-40/4-2	951	396	555	210	260	77
CDLK32-40/4						
CDLK32-50/5-2	1184	466	718	255	330	148
CDLK32-50/5						
CDLK32-60/6-2	1254	536	718	255	330	150
CDLK32-60/6						
CDLK32-70/7-2	1324	606	718	255	330	162
CDLK32-70/7						
CDLK32-80/8-2	1394	676	718	255	330	165
CDLK32-80/8						
CDLK32-90/9-2	1514	746	768	255	330	191
CDLK32-90/9						
CDLK32-100/10-2						
CDLK32-100/10	1584	816	768	255	330	194
CDLK32-110/11-2						
CDLK32-110/11	1679	886	793	285	360	230
CDLK32-120/12-2						
CDLK32-120/12	1749	956	793	285	360	234
CDLK32-130/13-2						
CDLK32-130/13	1894	1026	868	310	400	297
CDLK32-140/14-2						
CDLK32-140/14	1964	1096	868	310	400	300

